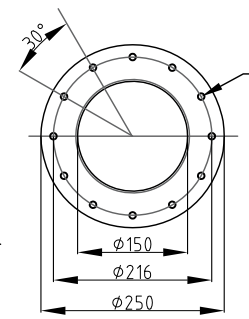
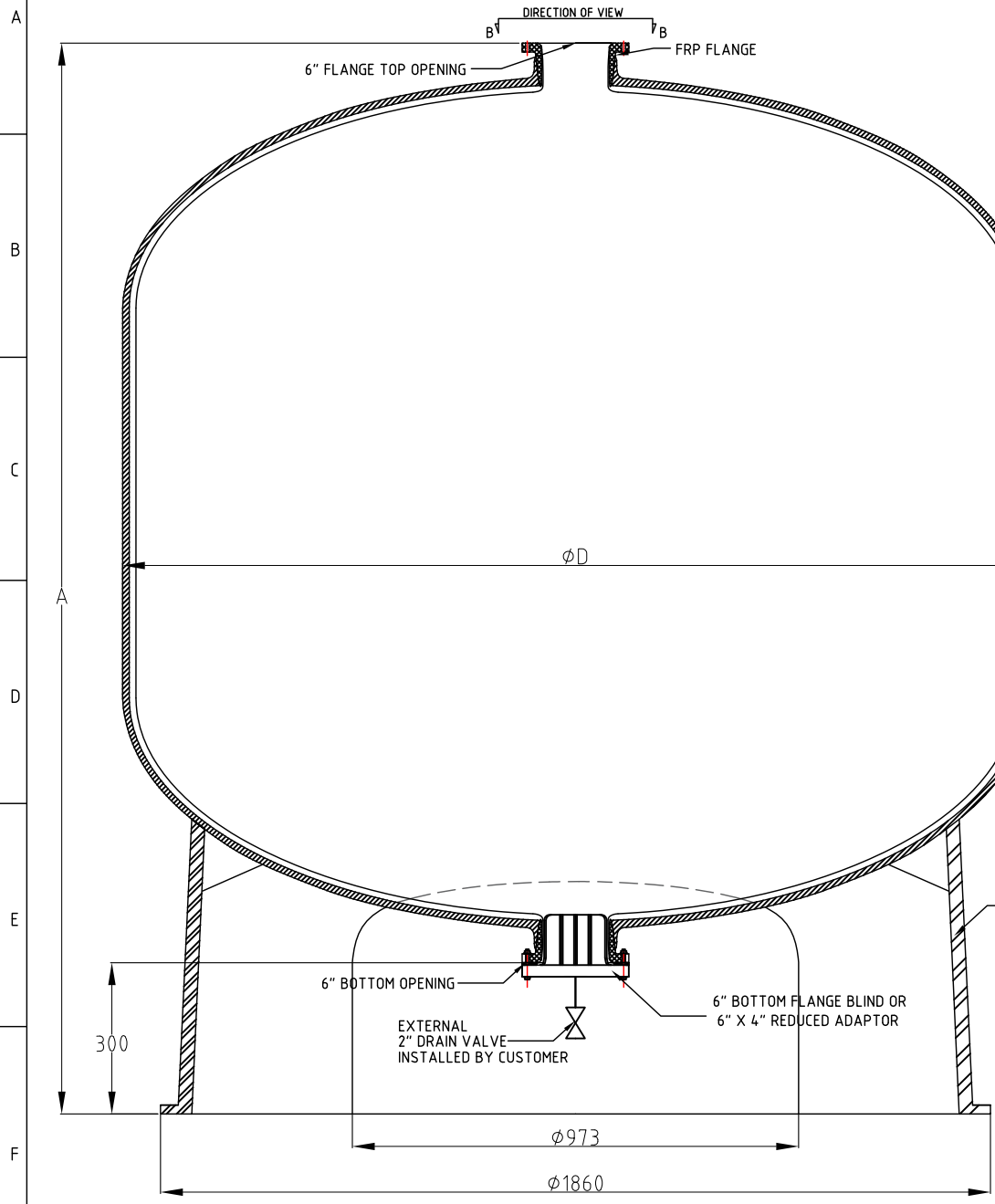


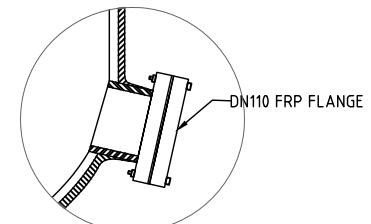
MODEL	HEIGHT(A±15)	DIA (D)	WEIGHT (±2%)	VOLUME (±1%)		
	mm (INCH)	mm (INCH)	KG	LITER (L)	US GALLON	CU FT
8096	2400.0 (94.49)	2030 (79.92)	370	4536.6	1198.57	160.21

PARAMETERS



6" FLANGE DIMENSION VIEW B-B

12 ea x Ø8.5mm Thro hole  
(12 ea x M8x70mm bolt kit)



OPTIONAL SIDE PORT VIEW C - C

- NOTE:
- OPERATING CONDITIONS:
    - MAXIMUM WORKING PRESSURE: 100PSI (6.89 BAR)
    - TEMPERATURE RANGE: 32°F - 131°F (0°C - 55°C)
    - MAXIMUM VACUUM: 5"Hg (127mmHg)
  - TANK INSPECTION STANDARD
    - 2.1. NO MORE THAN 5 INTERNAL AND EXTERNAL BURST DEBRIS.
    - 2.2. NO INTERNAL OR EXTERNAL DEBRIS OR BURNS LARGER THAN 3MM.
  - ALL DIMENSIONS ARE FOR REFERENCE ONLY AND SUBJECTED TO CHANGE WITHOUT NOTICE.
  - FACTORY STANDARD
    - 4.1 HYDRO-STATIC TEST PRESSURE: 10.5BAR FOR 30 MINUTES BEFORE DELIVERY
    - 4.2 VESSEL DESIGNED, MADE, TEST ACCORDING TO STANDARD HY/T067-2002 FOR WATER TREATMENT FRP PRESSURE VESSEL
  - DO NOT USED FOR CORROSIVE LIQUID
  - DN110 SIDE PORT OPENING OPTION FOR MEDIA REMOVAL

VERSION		MODIFICATION DESCRIPTION	
<b>PURELINE®</b> WATER SOLUTIONS			
SCALE: 1:2.5		QUANTITY: N/A	
MATERIAL: FRP		P/N: N/A	
PROJECTION:		UNLESS OR OTHERWISE SPECIFIED, ALL DIMENSION ARE IN mm. DIMENSION TOLERANCE 2 DECIMAL ±0.01 1 DECIMAL ±0.1 DECIMAL ±1 ANGLE 1°	
UNIT: mm		SIGNATURE: NAME: DATE: DESIGN: REVIEW: APPROVAL:	
DRAWING NO.: 20107		REVISION: 0 SHEET NO.: 1 OF 1	

MODEL: 8096" FRP PRESSURE TANK  
DESCRIPTION: 2 METER DIAMETER 6" FLANGE TOP/BOTTOM OPENING