



CODELINE® MEMBRANE HOUSINGS



ENGINEERED TO MAXIMIZE SYSTEM PERFORMANCE

ABOUT CODELINE®

Built to maximize the performance of your water treatment and purification systems, CodeLine's membrane housings are a leading worldwide brand. Our state-of-the-art manufacturing facilities and dedicated sales and service teams, have been setting industry standards for more than three decades.

Since the introduction of CodeLine's first membrane housing in 1976, ground breaking developments have shaped the water treatment industry. Continuous innovation and uncompromising reliability makes CodeLine the most trusted name in membrane housings.

CodeLine membrane housings are used in desalination, municipal water treatment, industrial processing, power generation, pharmaceutical industry, food and beverage, ultra-pure water.

SETTING THE STANDARDS OF QUALITY

CodeLine's commitment to quality means you can be confident that each membrane housing is subjected to rigorous quality inspection and hydro-testing before shipping. CodeLine membrane housings are manufactured using the highest grade raw-materials; computer controlled precision machines and adherence to international manufacturing standards.

Our Total Quality Management system is certified according to ISO 9001:2008. Depending on the model, CodeLine membrane housings can be certified per ASME Sec-X, NSF-61, CE or DWI.

Continuing with the tradition of setting standards in the industry, CodeLine introduced OCTA series of membrane housings. The OCTA features flats on the ID of the vessels that allow the flat sealing of the side ports.

CONTINUOUS INNOVATION

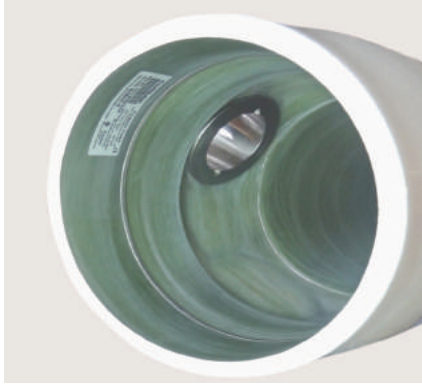
For over three decades, CodeLine has led the membrane housing industry, continually raising the bar for system performance through advanced engineering and expertise.

Continuing with the tradition of setting standards in the industry, CodeLine introduced OCTA series of membrane housings. OCTA series is a product of pioneering research in membrane housings with unique features and benefits.

KEY FEATURES

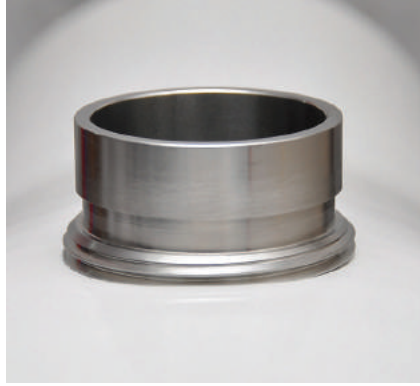
- Innovative side-port seal design - flat surface sealing
- IPS grooved side-ports that are threaded into the vessel shell - easy serviceability
- Quick Lock System - quick, easy membrane access
- Multi-porting option - elimination of manifolds & reduced foot print
- High operating temperature 190 °F - standard option up to 600 psi for 8-inch side port models.

MEMBRANE HOUSING SPECIALIST



FLAT SEALING

CodeLine with its continuous innovation has designed the OCTA technology, which has made flat sealing in a circular vessel a reality. The result is reliable and superior sealing of side-ports.



THREADED SIDE-PORT

IPS grooved side-ports are threaded into the vessel shell. Ease of field repair – threaded port facilitates easy port and seal replacement in the field.



QUICK LOCK SYSTEM

The user friendly, quick lock head retention system allows easy access to the membranes. The Quick Lock System is a single piece retention system that does not require tools. Available on pressures up to 1,200 psi.



MULTI-PORTING

Multi-porting for sizes of 1.5, 2.0, 2.5, 3.0, and 4.0 inch, which eliminates costly manifolds and reduces the system's footprint.



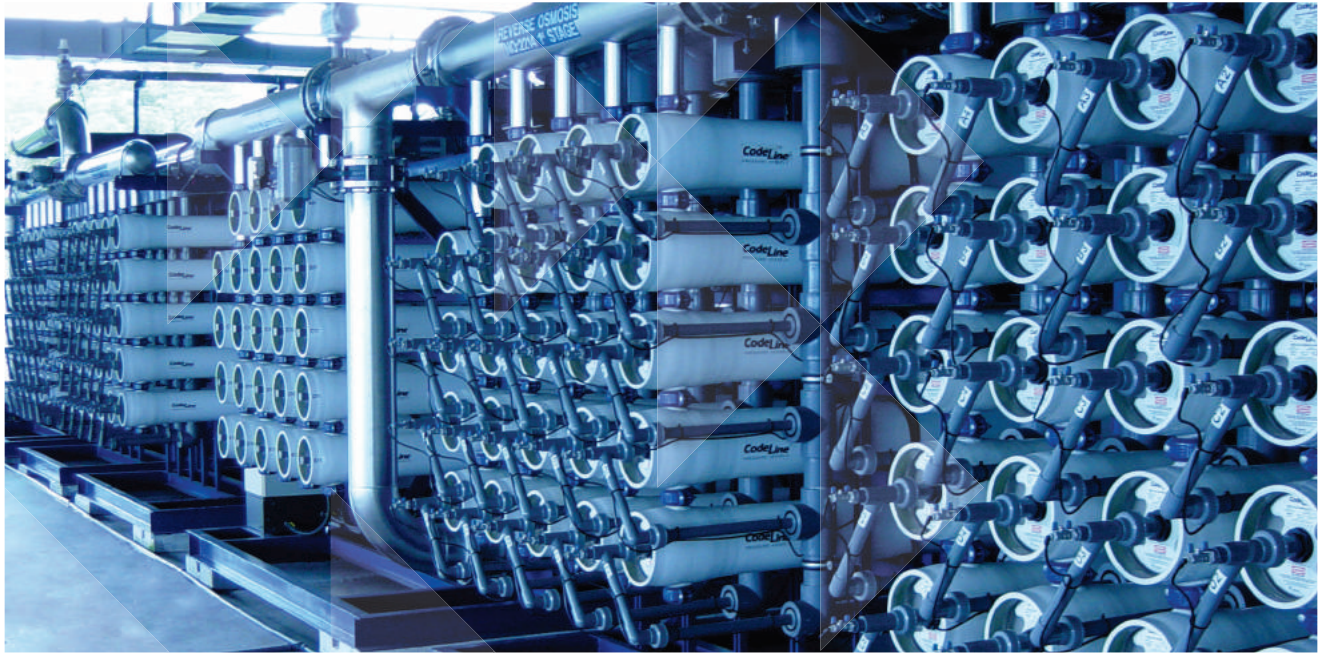
FAIL SAFE SHELL

Fail safe shell – vessel designed to weep, preventing catastrophic failure. CodeLine vessels are designed to meet ASME Section X requirements including 6x safety factor.



ONE PIECE HEAD

Single Piece Head for Non Coded Vessels results in fewer components and seals. This enables a high operating temperature, up to 190 °F, for vessels up to 600 psi. The flexible design provides standard options of 1 inch FNPT or 1.5 inch IPS grooved connections.



EXECUTIONS

CodeLine membrane housings, manufactured using superior technology and precision machines, are designed to operate continuously for long-term use in critical and demanding applications including reverse osmosis, nano-filtration and, ultrafiltration.

Our proprietary manufacturing process gives a Mirror ID Finish for easy loading and unloading of membranes. The Quick Lock head retention technology provides faster access to the membranes.

8-INCH SIDE ENTRY - 80S/80H/80U

CodeLine side-port membrane housings are available in a wide operating pressure range from 150 to 1200 psi.

CodeLine's multiport feature allows vessel to vessel connection, minimizing costly manifolds. Using OCTA technology, which is a unique feature of CodeLine, side ports are mounted on flat sealing surfaces and side ports are threaded for easy serviceability.

Depending on the requirements of the system design, side ports can be selected from the range of CodeLine models available.

- 80S Series – Available with side port, options of 1.5, 2.0 and 2.5 inch IPS grooved
- 80H Series – Available with side port, options of 3.0 inch IPS grooved
- 80U Series – Available with side port, options of 4.0 inch IPS grooved.

8-INCH END ENTRY - 80E

CodeLine 8-inch end entry membrane housings are available in operating pressures of 300, 450, 1000 and 1200 psi.

4-INCH SIDE ENTRY - 40S

CodeLine 4-inch side entry membrane housings are available in operating pressure range of 300 psi, 450 psi, and 600 psi.

Multi-port feature in 4 inch CodeLine membrane housing allows vessel to vessel connection, minimizing costly manifolds. These housings are designed to accommodate any 4 inch standard 40 inch long membrane.

4-INCH END ENTRY - 40E

CodeLine 4-inch end entry membrane housings are available in operating pressures of 300, 600 and 1000 psi. These housings accommodate any 4 inch standard 40 inch long membrane.

TECHNICAL SPECIFICATIONS

MODEL	DRAWING NUMBER	DESIGN/OPERATING PRESSURE	MAX. OPERATING TEMPERATURE	QUALIFICATION PRESSURE	ELEMENT LENGTH
40E SERIES					
40E30N	518016	300 psi / 20 bar	120 °F / 49 °C	1800 psi / 124 bar	1 - 3
40E60	518017	600 psi / 41 bar	120 °F / 49 °C	3600 psi / 248 bar	1 - 6
40E100	518015	1000 psi / 68 bar	120 °F / 49 °C	6000 psi / 413 bar	1 - 7
40S SERIES					
40S30 Coded	99311	300 psi / 20 bar	120 °F / 49 °C	1800 psi / 124 bar	1 - 6
40S45 Coded	99315	450 psi / 31 bar	120 °F / 49 °C	2700 psi / 186 bar	1 - 6
40S60 Coded	99313	600 psi / 41 bar	120 °F / 49 °C	3600 psi / 248 bar	1 - 6
40S30 Non-coded	99312	300 psi / 20 bar	120 °F / 49 °C	1800 psi / 124 bar	1 - 6
40S45 Non-coded	99316	450 psi / 31 bar	120 °F / 49 °C	2700 psi / 186 bar	1 - 6
40S60 Non-coded	99314	600 psi / 41 bar	120 °F / 49 °C	3600 psi / 248 bar	1 - 6
80E SERIES					
80E30	99111	300 psi / 20 bar	120 °F / 49 °C	1800 psi / 124 bar	1 - 8
80E45	99112	450 psi / 31 bar	120 °F / 49 °C	2700 psi / 186 bar	1 - 8
80E60	99109	600 psi / 41 bar	120 °F / 49 °C	3600 psi / 248 bar	1 - 8
80E100	99108	1000 psi / 68 bar	120 °F / 49 °C	6000 psi / 413 bar	1 - 8
80E120	99110	1200 psi / 82 bar	120 °F / 49 °C	7200 psi / 496 bar	1 - 8
80S SERIES					
80S15 Coded	99159	150 psi / 10 bar	190 °F / 88 °C	900 psi / 62 bar	1 - 8
80S30 Coded	99160	300 psi / 20 bar	190 °F / 88 °C	1800 psi / 124 bar	1 - 8
80S45 Coded	99161	450 psi / 31 bar	190 °F / 88 °C	2700 psi / 186 bar	1 - 8
80S60 Coded	99162	600 psi / 41 bar	190 °F / 88 °C	3600 psi / 248 bar	1 - 8
80S100 Coded	99163	1000 psi / 68 bar	150 °F / 66 °C	6000 psi / 413 bar	1 - 8
80S120 Coded	99164	1200 psi / 82 bar	150 °F / 66 °C	7200 psi / 496 bar	1 - 8
80S15 Non-coded	99171	150 psi / 10 bar	190 °F / 88 °C	900 psi / 62 bar	1 - 8
80S30 Non-coded	99172	300 psi / 20 bar	190 °F / 88 °C	1800 psi / 124 bar	1 - 8
80S45 Non-coded	99173	450 psi / 31 bar	190 °F / 88 °C	2700 psi / 186 bar	1 - 8
80S60 Non-coded	99174	600 psi / 41 bar	190 °F / 88 °C	3600 psi / 248 bar	1 - 8
80H SERIES					
80H15	99165	150 psi / 10 bar	190 °F / 88 °C	900 psi / 62 bar	1 - 8
80H30	99166	300 psi / 20 bar	190 °F / 88 °C	1800 psi / 124 bar	1 - 8
80H45	99167	450 psi / 31 bar	190 °F / 88 °C	2700 psi / 186 bar	1 - 8
80H60	99168	600 psi / 41 bar	190 °F / 88 °C	3600 psi / 248 bar	1 - 8
80H100	99169	1000 psi / 68 bar	150 °F / 66 °C	6000 psi / 413 bar	1 - 8
80H120	99170	1200 psi / 82 bar	150 °F / 66 °C	7200 psi / 496 bar	1 - 8
80U SERIES					
80U30	99021	300 psi / 20 bar	190 °F / 88 °C	1800 psi / 124 bar	1 - 8
80U45	99189	450 psi / 31 bar	190 °F / 88 °C	2700 psi / 186 bar	1 - 8
80U60	99186	600 psi / 41 bar	190 °F / 88 °C	3600 psi / 248 bar	1 - 8



CODELINE®

PENTAIR WATER INDIA PVT. LTD. L / 52 - 55, VERNA INDUSTRIAL ESTATE, VERNA, GOA, INDIA - 403 722 WWW.CODELINE.COM

All Pentair trademarks and logos are owned by Pentair, Inc. All other brand or product names are trademarks or registered marks of their respective owners. Because we are continuously improving our products and services, Pentair reserves the right to change specifications without prior notice. Pentair is an equal opportunity employer.

Codeline General E-12/12 © 2012 Pentair, Inc. All Rights Reserved.